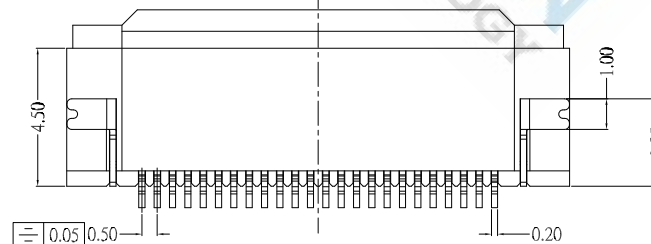
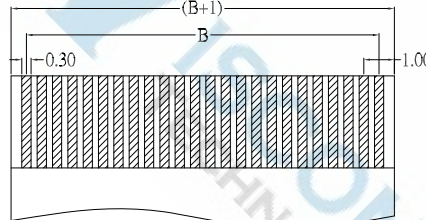
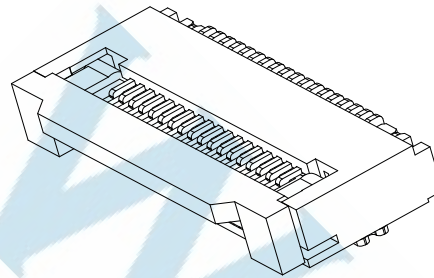
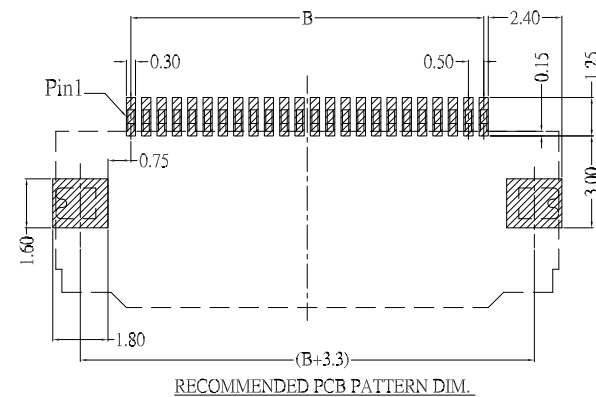
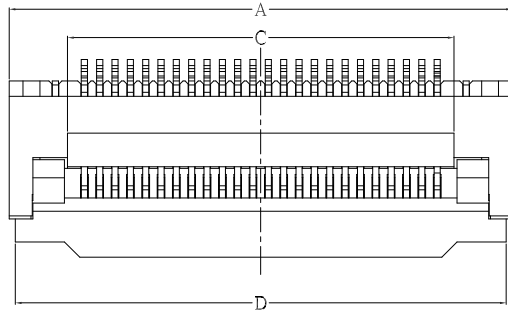
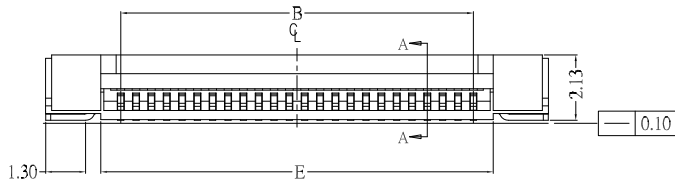
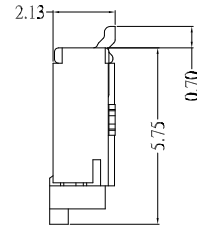
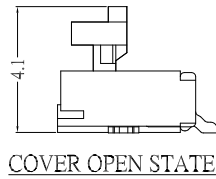


CABLE INSERT DIM.
SECTION: A-A



No. of contacts	Dimensions					No. of contacts	Dimensions				
	A	B	C	D	E		A	B	C	D	E
04	6.4	1.5	2.6	6.0	2.8	35	21.9	17.0	18.1	21.5	18.3
05	6.9	2.0	3.1	6.5	3.3	36	22.4	17.5	18.6	22.0	18.8
06	7.4	2.5	3.6	7.0	3.8	37	22.9	18.0	19.1	22.5	19.3
07	7.9	3.0	4.1	7.5	4.3	38	23.4	18.5	19.6	23.0	19.8
08	8.4	3.5	4.6	8.0	4.8	39	23.9	19.0	20.1	23.5	20.3
09	8.9	4.0	5.1	8.5	5.3	40	24.4	19.5	20.6	24.0	20.8
10	9.4	4.5	5.6	9.0	5.8	41	24.9	20.0	21.1	24.5	21.3
11	9.9	5.0	6.1	9.5	6.3	42	25.4	20.5	21.6	25.0	21.8
12	10.4	5.5	6.6	10.0	6.8	43	25.9	21.0	22.1	25.5	22.3
13	10.9	6.0	7.1	10.5	7.3	44	26.4	21.5	22.6	26.0	22.8
14	11.4	6.5	7.6	11.0	7.8	45	26.9	22.0	23.1	26.5	23.3
15	11.9	7.0	8.1	11.5	8.3	46	27.4	22.5	23.6	27.0	23.8
16	12.4	7.5	8.6	12.0	8.8	47	27.9	23.0	24.1	27.5	24.3
17	12.9	8.0	9.1	12.5	9.3	48	28.4	23.5	24.6	28.0	24.8
18	13.4	8.5	9.6	13.0	9.8	49	28.9	24.0	25.1	28.5	25.3
19	13.9	9.0	10.1	13.5	10.3	50	29.4	24.5	25.6	29.0	25.8
20	14.4	9.5	10.6	14.0	10.8	51	29.9	25.0	26.1	29.5	26.3
21	14.9	10.0	11.1	14.5	11.3	52	30.4	25.5	26.6	30.0	26.8
22	15.4	10.5	11.6	15.0	11.8	53	30.9	26.0	27.1	30.5	27.3
23	15.9	11.0	12.1	15.5	12.3	54	31.4	26.5	27.6	31.0	27.8
24	16.4	11.5	12.6	16.0	12.8	55	31.9	27.0	28.1	31.5	28.3
25	16.9	12.0	13.1	16.5	13.3	56	32.4	27.5	28.6	32.0	28.8
26	17.4	12.5	13.6	17.0	13.8	57	32.9	28.0	29.1	32.5	29.3
27	17.9	13.0	14.1	17.5	14.3	58	33.4	28.5	29.6	33.0	29.8
28	18.4	13.5	14.6	18.0	14.8	59	33.9	29.0	30.1	33.5	30.3
29	18.9	14.0	15.1	18.5	15.3	60	34.4	29.5	30.6	34.0	30.8
30	19.4	14.5	15.6	19.0	15.8	61	34.9	30.0	31.1	34.5	31.3
31	19.9	15.0	16.1	19.5	16.3	62	35.4	30.5	31.6	35.0	31.8
32	20.4	15.5	16.6	20.0	16.8	63	35.9	31.0	32.1	35.5	32.3
33	20.9	16.0	17.1	20.5	17.3	64	36.4	31.5	32.6	36.0	32.8
34	21.4	16.5	17.6	21.0	17.8	65	36.9	32.0	33.1	36.5	33.3

NOTE:

1. Material:

1.1 Housing: High-temp thermoplastic UL94V-0.

1.2 Actuator: High-temp thermoplastic UL94V-0, black.

1.3 Terminal: Phosphor Bronze.

1.4 Fitting nail: Brass.

2. Plating:

2.1 Terminal: tin(lead free); overall nickel under plated.

2.2 Fitting nail: tin(lead free); overall nickel under plated.

DIMENSIONS TOLERANCE METRIC .0=±0.30 .00=±0.20 .000=±0.10 ANG.=±2°	單位(UNITS)	MM	處理(FINISH)	SEE NOTE	審校(CH'K)	Calvin	圖名(NAME) FPC 0.5 CONNECTOR H:2.0mm 掀蓋式 下接觸	WISCONN Technology Co., Ltd Tel:02-2742-1798 Fax:02-2742-1898						
	數量(QTY)	N/A	繪圖(DRAW)	Johnson	核准(APP'D)	Selena								
	料號(PART NUMBER)	WF0521F-xx-P-D-R	圖號(DRAW NUMBER)	T002	日期 DATE)	MAR.20.2015	比例(SCALE)	1/1	圖紙(SIZE)	A4	頁次(SHEET)	1	版次(REV.)	A
	材料(MT'L)	SEE NOTE	設計(DE'N)	Mike	日期 DATE)	MAR.20.2015	圖檔(FILE NAME .DWG)							